

Configuration Guide:

Implementation of SLV on Gigaset A150IP

ALL RIGHTS RESERVED

©Neotel (Pty) Limited 2009

No part of this document may be photocopied reproduced translated or reduced to any electronic or machine readable form without prior permission of Neotel (Pty) Limited.

Uncontrolled Document

This document is uncontrolled unless viewed from a controlled area. Where this document is used in a printed format or viewed from an uncontrolled area it is the responsibility of the person using this document to ensure that it is the correct issue. If in doubt contact the document owner or the BPM Department at BusinessProcessManagement@neotel.co.za.

Last Revision Date	2015-04-21
Version	1.0
Author	Neotel Lab
Owner	Neotel
Department	Technology and Innovation

Liquid Telecom Offices

Mauritius (Head Office) • Botswana • DRC • Kenya • Lesotho • Rwanda • South Africa • Tanzania • Uganda • Zambia • UAE • UK

Neotel (Pty) Ltd. Registered Address: 401 Old Pretoria Main Road, Halfway House, Midrand 1685. Company Reg. No. 2004/004619/07.

Internal Use Only

Table of Contents

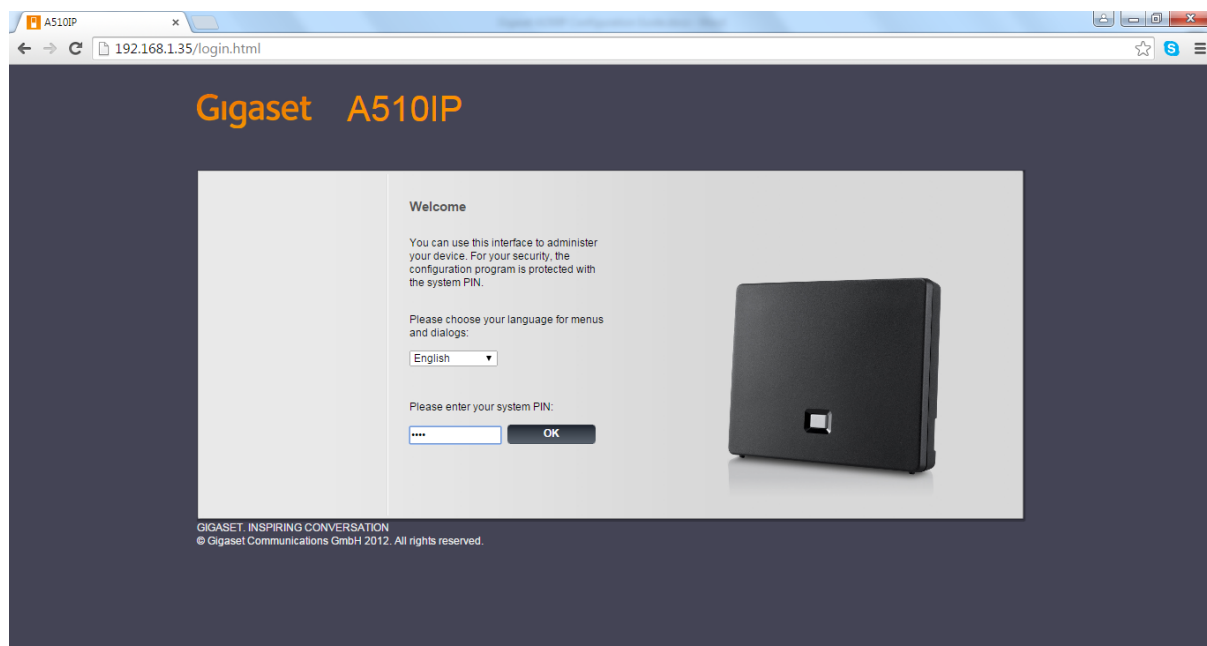
Configuration Guide:	1
Implementation of SLV on Gigaset A150IP	1
Introduction	3
Gigaset A150IP Setup	3
Configuring SIP Account.....	3
Configuring Codec	5
Configuring DTMF.....	6

Introduction

The following document is a user guide to configure Single Line Voice (SLV) on Gigaset A150IP.

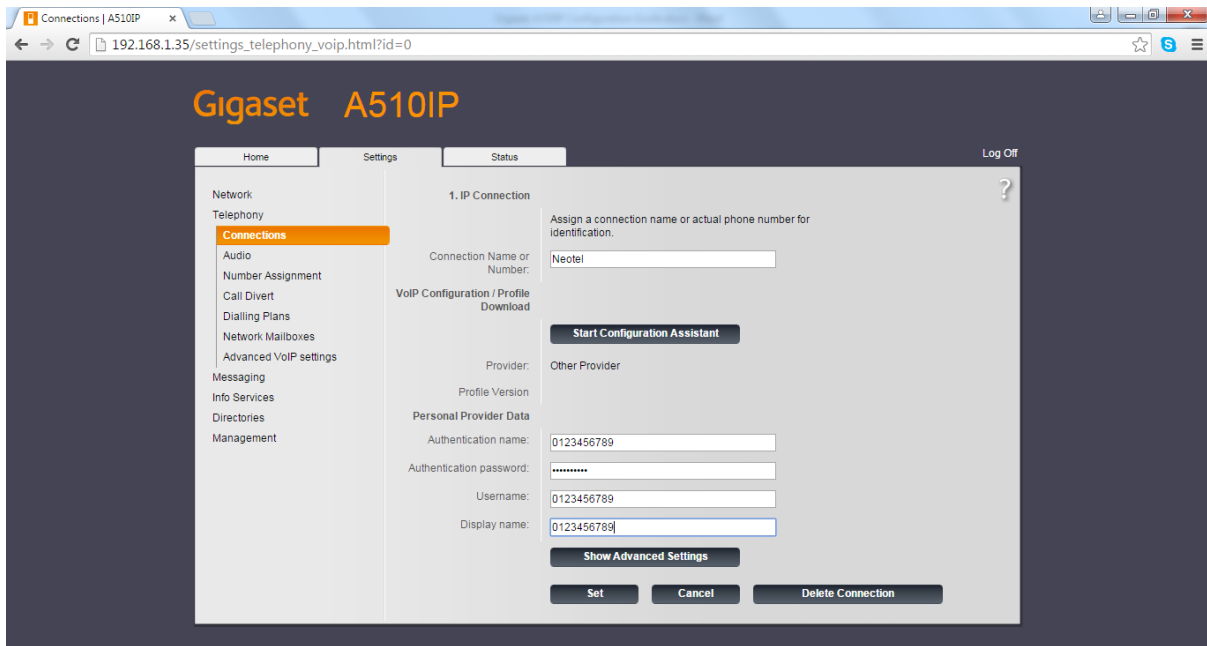
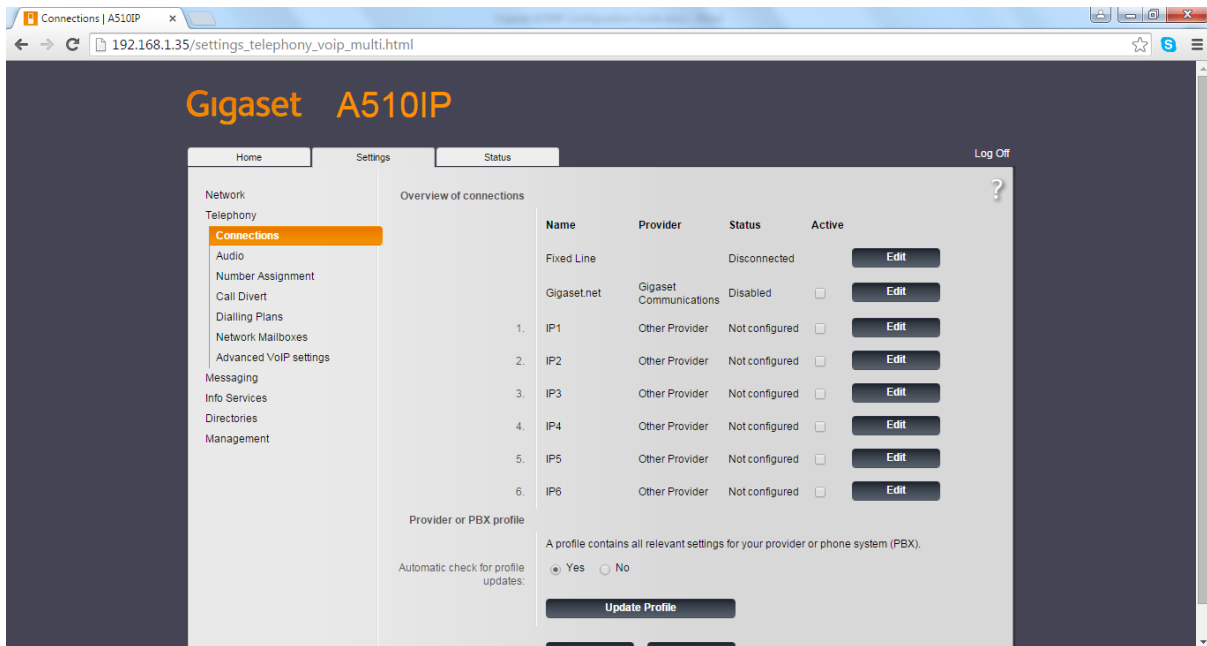
Gigaset A150IP Setup

Connect the Ethernet cable from the Gigaset base-station into one of your router ports. Power up the Gigaset base-station. Determine the IP address assigned by your router to the Gigaset. Browse to the Gigaset's IP address using your PC's web browser. The login page for the Gigaset should load. The default system PIN is 1234.



Configuring SIP Account

Select Settings and then Connections. Click on the Edit button beside IP1 (row 1).



Input the following details:

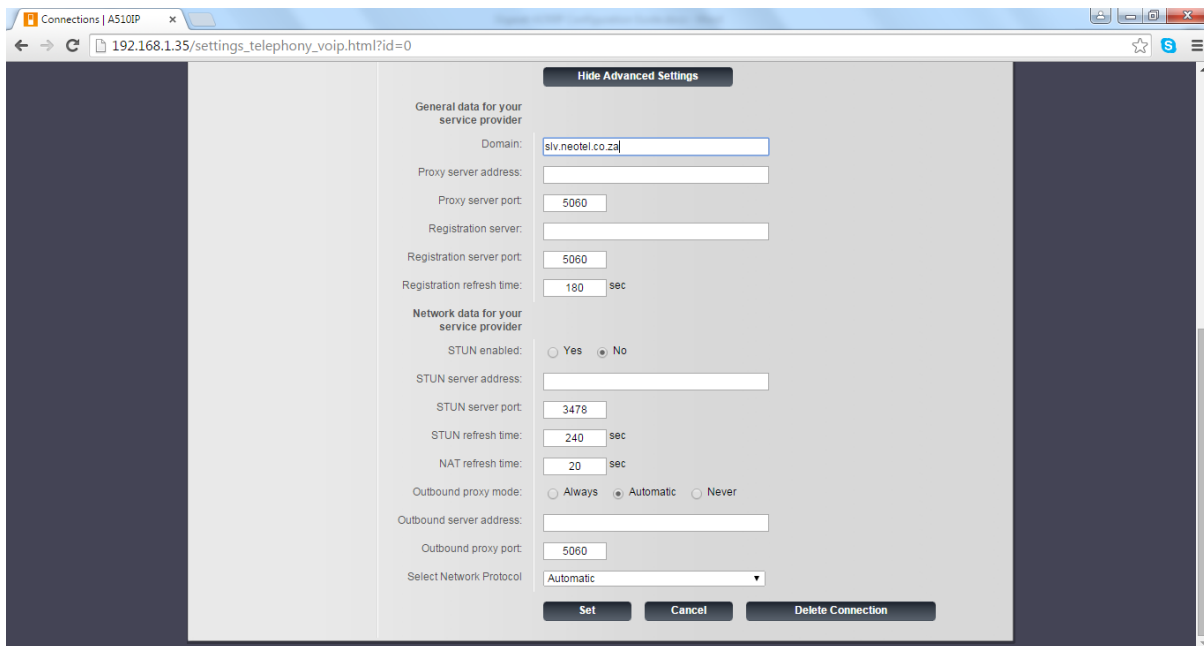
Connection Name: Neotel

Authentication name: Use the number assigned to you when signed up for SLV service.

Authentication password: Enter the password assigned to you or your new password which you registered on the portal.

Username & Display name: Use the number assigned to you when signed up for SLV service.

Click on 'Show Advanced Settings' button.



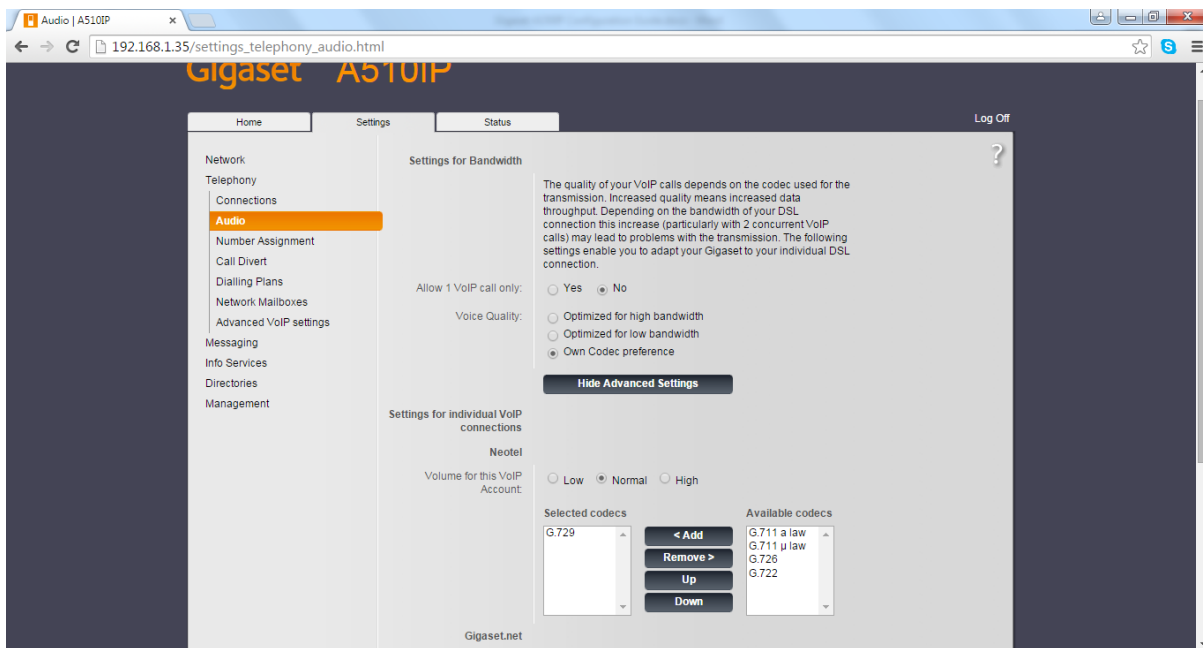
Domain: Dependent on your location use the appropriate server

- Johannesburg Customers: 41.160.46.68 or jhb.slv.neotel.co.za or slv.neotel.co.za
- Cape Town Customers: 41.164.178.196 or cpt.slv.neotel.co.za
- Durban Customers: 41.162.56.132 or dnr.slv.neotel.co.za

After entering the details, click on Set button.

Configuring Codec

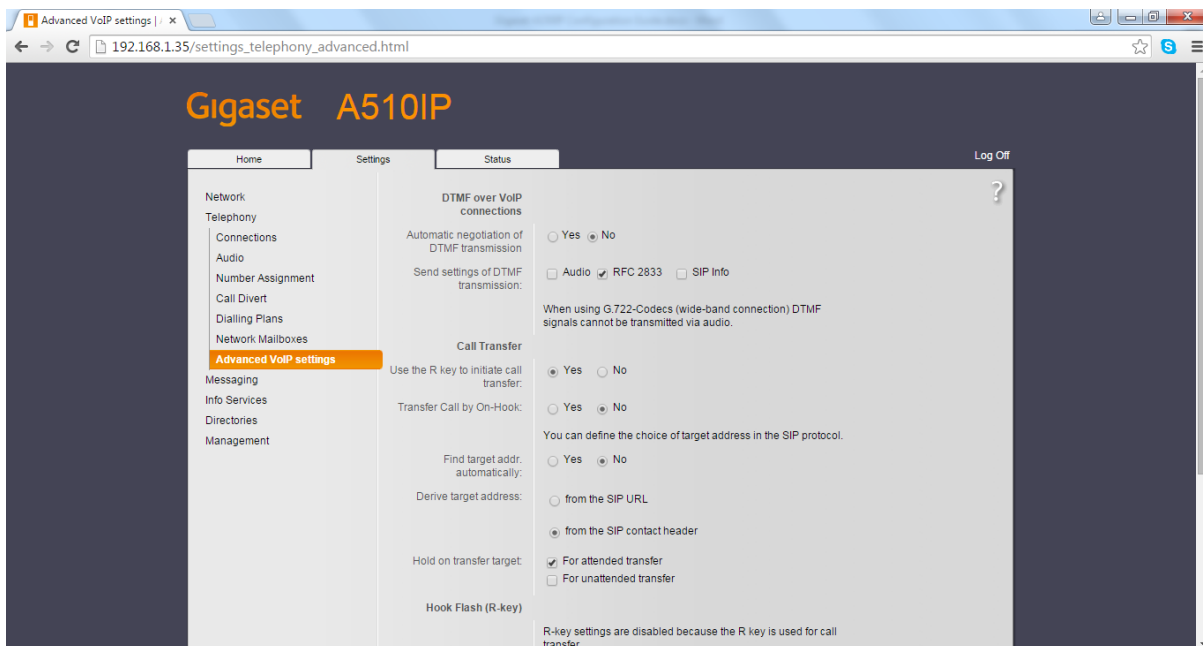
Select 'Audio' followed by 'Show Advanced Settings'. The Selected codecs must be G.729; remove all codecs except for G.729, then scroll down and click on Set button.



Configuring DTMF

Select 'Advanced VoIP settings' from the menu, then change 'Automatic negotiation of DTMF transmission' to No.

Send settings of DTMF transmission: RFC 2833.



Scroll down and click on Set button.

After configuring the Gigaset the Status will change to Registered. You can now make phone calls from your Gigaset phone.

